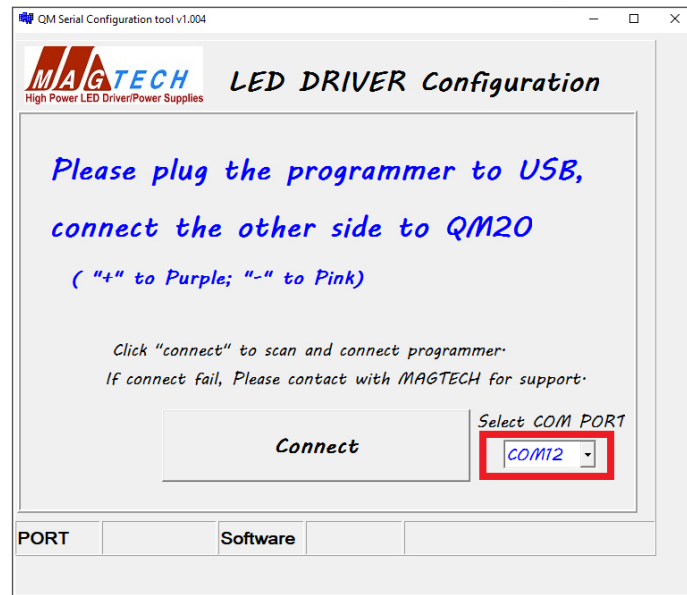


Step 1: Open the Configuration Tool

Run the QM Serial Configuration Tool. Choose the correct the COM port from the dropdown list.

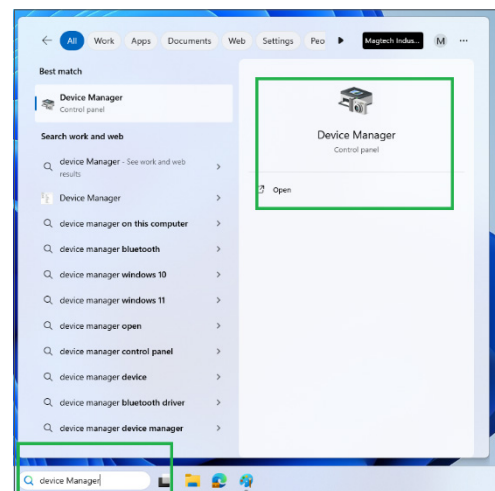
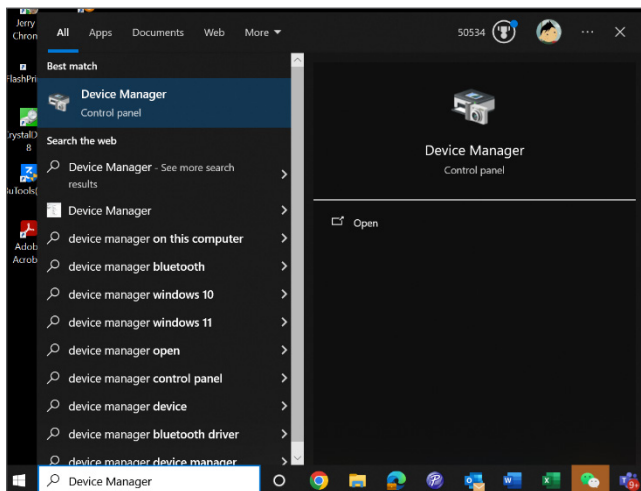
If you need to find the port number used by dongle, please follow the Step 2 and Step 3.

Otherwise you can go to Step 4.



Step 2: Open the device Manager.

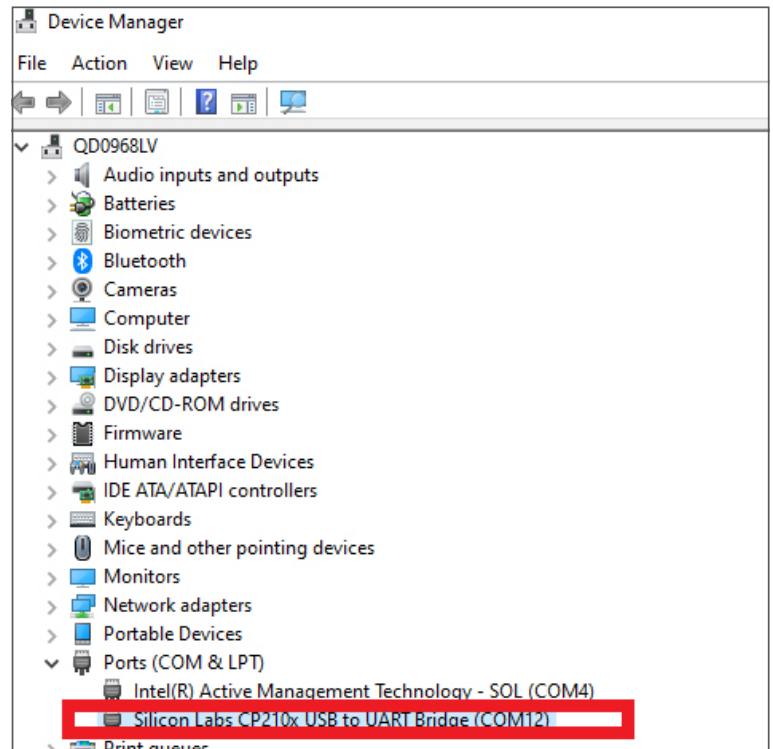
Type the Device Manager in the window search bar and run it.



Step 3: Find the Port

Expand the Ports (COM & LPT) category. Find the "Silicon Labs CP210x USB to UART Bridge (COM3)". Remember the com port number. Like this case, it is COM3.

If the Silicon Labs CP210x does not show up, please refer to PDF file "QM20 USB Dongle Windows Driver Installation Instruction".

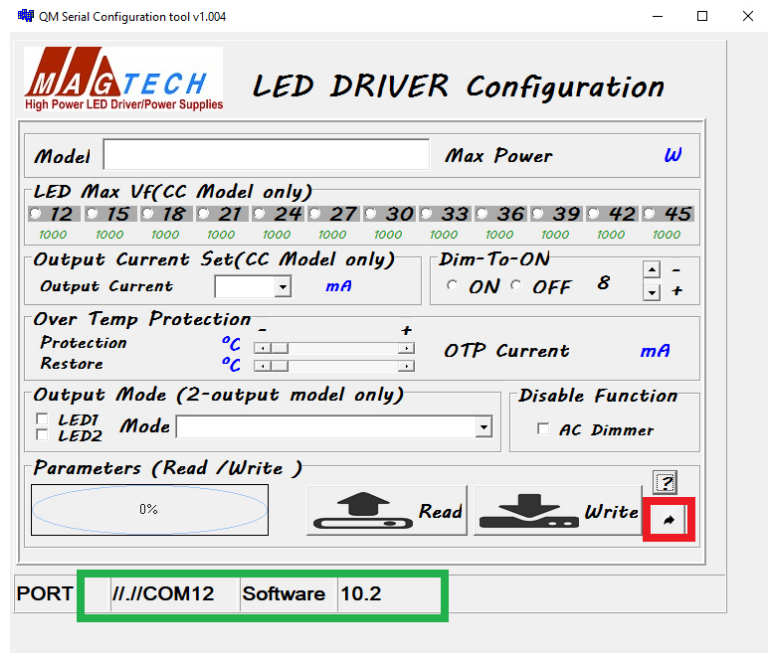


Step 4: Connecting the LED driver

After select the correct COM port number, click the "Connect" to connect to the adaptor and driver.

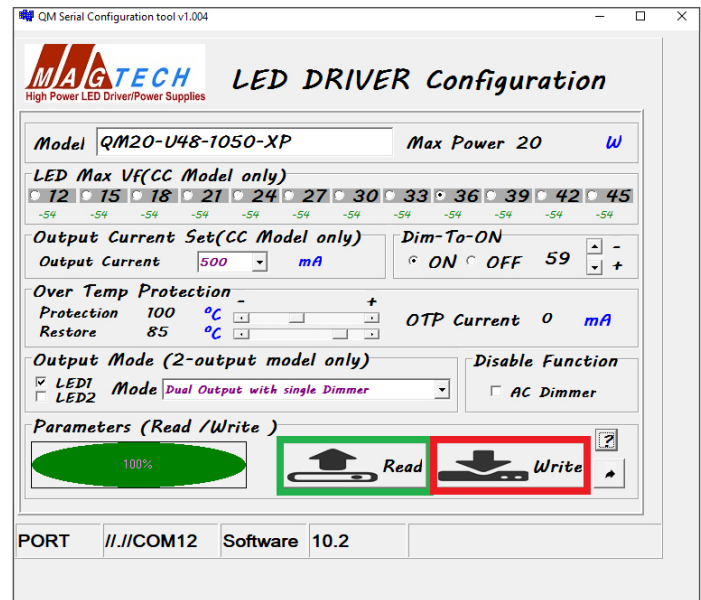
If the adaptor is detected, it will display the port number as shown in the green box.

If the QM20 already connects to the adapter, the software version will also show



Step 5: Connecting the LED driver

- Load the current LED driver setting
Click the Read button to load the setting of the driver
- Select the closest LED Vf value for the application;
- Choose the output current from the dropdown list;
- Select the Dim-To-ON mode;
- Over temperature Protection Setting;
- Output Mode (For Dual channel output driver only)
- Disable AC dimming Option;
- Save the setting; Click the Write button to save the setting back to the driver.



Step 6: Use the LED Driver

After configuration, disconnect the purple/pink wire from the adaptor. The driver is ready to use with LED.

Have Questions? We're Here to Help!

If you have any questions or need further information, please don't hesitate to reach out. Our team is ready to assist you!

www.magtechind.com

Telephone: 702 - 364 - 9998

Fax: 702 - 364 - 1562

Email: csupport@magtechind.com | sales@magtechind.com

Address: 5625 Arville St. Suite A
Las Vegas NV, 89129